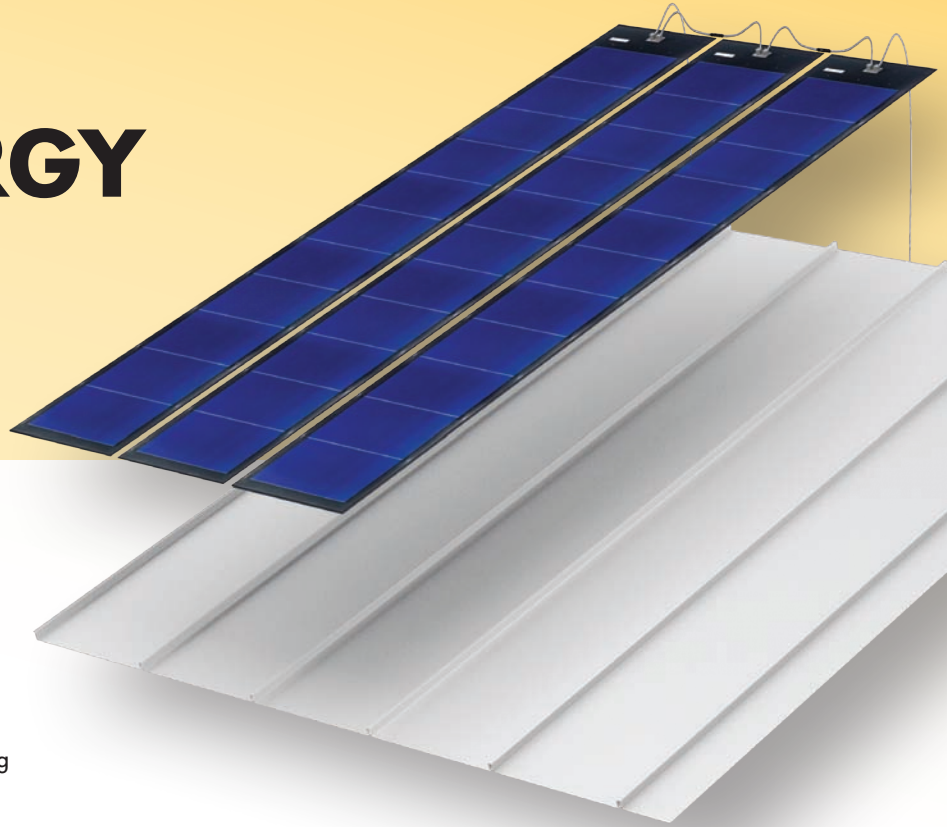


SOLR™ α-Si SOLAR ENERGY ROOFING PANELS



SOLR α-Si is a thin-film flexible laminate. SOLR α-Si achieves higher relative efficiency under high temperatures and low light conditions. Bypass diodes allow for shadow tolerance.

SOLR α-Si is a building integrated photovoltaic (BIPV) comprised of our COOLR® metal laminated with SOLR α-Si (amorphous silicon) for an aesthetically pleasing look, without roofing penetrations.

SOLR α-Si can be used in combination with COOLR® and TOPR products for a single-source warranty.

SOLR PANEL PROFILES: SOLR α-Si can be designed to fit standard profiles of 16", 18", and 20" in width. Choose from any of our COOLR® metal roofing colors.

WARRANTY: 5-year limited warranty against defective materials and workmanship. 25-year warranty on power output. (80% of power output rating).

	SOLR α-Si 68	SOLR α-Si 136	SOLR α-Si 144
Rated Power Output	68 Watts	136 Watts	144 Watts
Pmax Voltage	16.5 V	33.0 V	33.0 V
Weight/Sq. Ft.	0.7 lbs/Sq. Ft	0.7 lbs/Sq. Ft	0.7 lbs/Sq. Ft
Dimensions	15.5" W x 9.5' L	15.5" W x 18' L	15.5" W x 18' L
Cell Type	Triple Junction	Triple Junction	Triple Junction

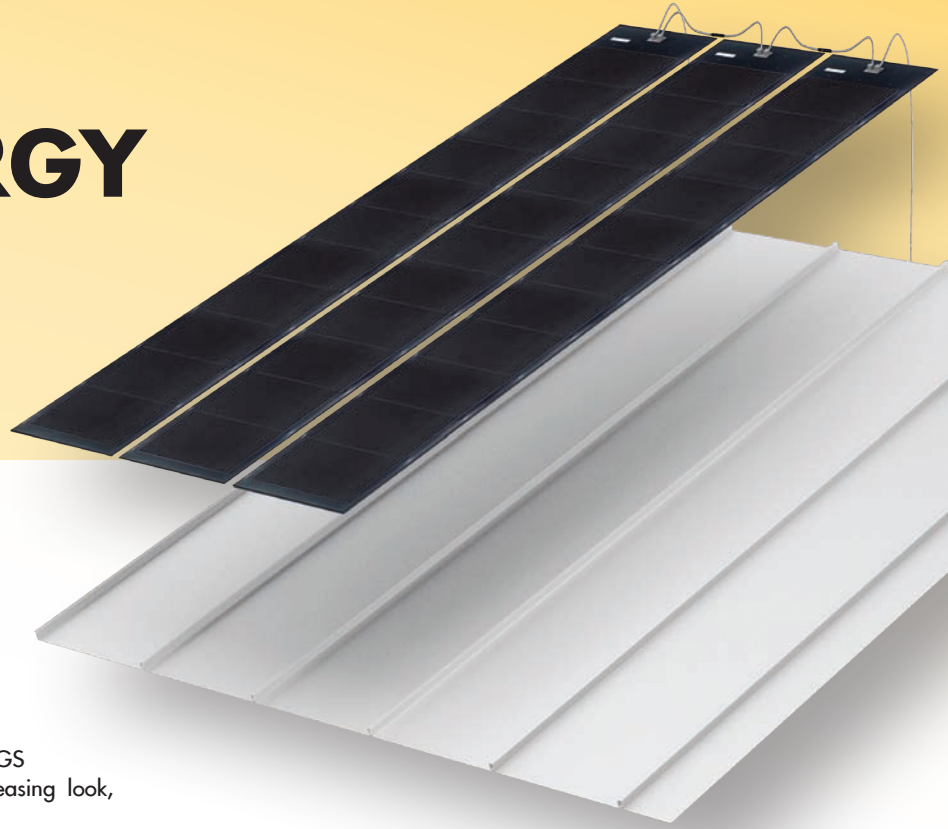
Meets UL Standard 1703, up to 600 VDC. SOLR α-Si 144 up to 1000 VDC.
Meets IEC 61646 Requirements



For more information visit www.solrrroofing.com
Or call 1.800.283.5262



SOLR™ CIGS SOLAR ENERGY ROOFING PANELS



SOLR CIGS is a thin-film flexible laminate. SOLR CIGS achieves higher relative efficiency under high temperatures and low light conditions. Bypass diodes allow for shadow tolerance. Is comprised of series connected cells, optimizing panel performance.

SOLR CIGS is a building integrated photovoltaic (BIPV) comprised of our COOLR® metal laminated with SOLR CIGS (copper indium gallium di-selenide) for an aesthetically pleasing look, without roofing penetrations.

SOLR CIGS can be used in combination with COOLR® and TOPR products for a single-source warranty.

WARRANTY: 5-year limited warranty against defective materials and workmanship. 25-year warranty on power output. (80% of power output rating).

	SOLR CIGS 70	SOLR CIGS 75	SOLR CIGS 80	SOLR CIGS 85	SOLR CIGS 215	SOLR CIGS 230	SOLR CIGS 245	SOLR CIGS 260
Rated Power Output	70 Watts	75 Watts	80 Watts	85 Watts	215 Watts	230 Watts	245 Watts	260 Watts
Pmax Voltage	23.7 V	23.9 V	24.4 V	25.1 V	70.9 V	72.8 V	73.0 V	76.3 V
Weight/Sq. Ft.	0.53 lbs/Sq. Ft	0.53 lbs/Sq. Ft	0.53 lbs/Sq. Ft	0.53 lbs/Sq. Ft	0.51 lbs/Sq. Ft	0.51 lbs/Sq. Ft	0.51 lbs/Sq. Ft	0.51 lbs/Sq. Ft
Dimensions	11.5" W x 117.3" L	11.5" W x 117.3" L	11.5" W x 117.3" L	11.5" W x 117.3" L	34.6" W x 117.3" L	34.6" W x 117.3" L	34.6" W x 117.3" L	34.6" W x 117.3" L

Meets UL Standard 1703, up to 600 VDC.
Meets IEC 61646, IEC 61730 Requirements



For more information visit www.solrrroofing.com
Or call 1.800.283.5262

